

# Image 180

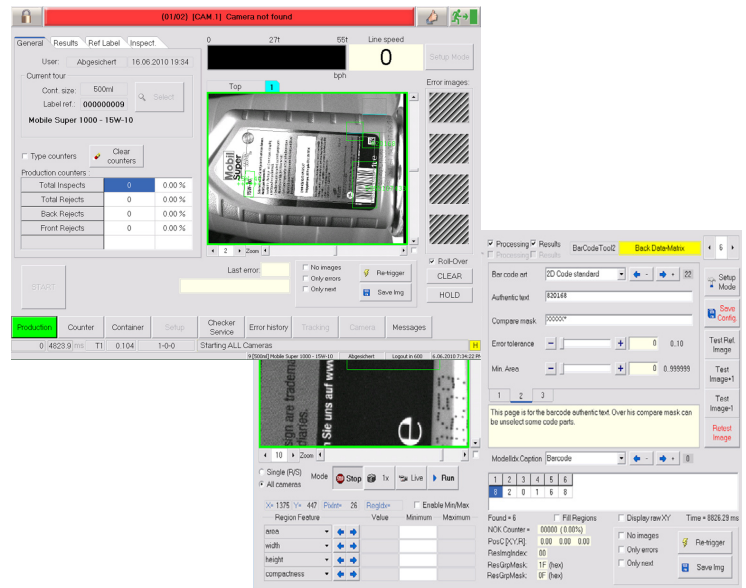


## Advantages

- Compact design for easy integration on new or existing production Lines.
- Industrial construction for long-term reliability.
- Fully functioned Windows based IMAGE software with touch-screen user-interface for easy access and fast setups.
- High-power LED illumination provides optimized illumination with longevity.
- Integrated reject tracking with interfaces to any of BBULLS range of industry proven reject systems, or third party device.
- Highly-versatile with interfaces for up to 12 cameras, x-ray detection, ultrasonic height arrays, and other inspection technologies.
- Extendable functionality using additional inspection bridges.
- Remote Communications and support options (CAN / TCP / IP interface).

Built upon BBULL long-time expertise in industrial inspection, the **BBULL IMAGE 180** high precision multi-camera system provides a robust solution for online inspection of two-sided packages. A number of different application modules and options allow use in the plastics, food, oil and chemical industry on full or empty containers.

The system can be supplied as a turn-key stand-alone system including a new compact label inspection bridge, or as retrofit utilizing components from your existing Gemini inspection equipment. The **BBULL IMAGE 180** industrial control unit provides sophisticated inspection algorithms to locate measure and inspect for all common label quality and application issues.



**BBULL**<sup>®</sup>  
TECHNOLOGY - USA

# Image 180

## Features

### Standard Label Inspections

- Missing labels
- Faulty or damaged labels
- Incorrect labels  
(Details to 1mm<sup>2</sup>)
- Horizontal and vertical displacement  
(+/- 1mm)
- Tilted labels  
(+/- 0.5mm)
- Bar-code, Data-Matrix, and Lot Code Verification

### Optional Inspections

- Thread, Flash and Short Shot Inspection  
(Side view)
- Faulty Cut and Ovality Inspection  
(Top View)
- Custom Inspection Applications



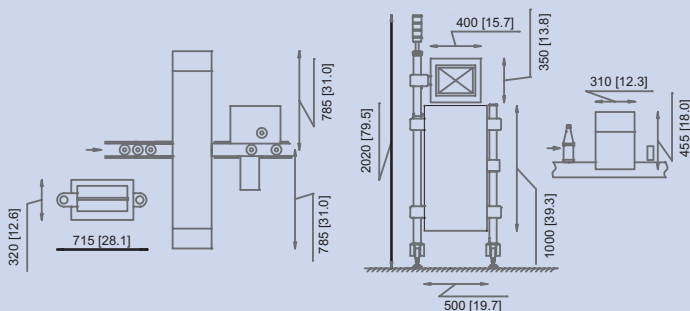
## Specifications

<b>Max Speed:</b>	60,000c/h; 1000bpm
<b>Max Line Speed:</b>	1.7m/s; 5.6ft/s
<b>Container Types:</b>	square or rectangular packages
<b>Electrical Requirements:</b>	208-250vac; 50/60hz; 1A
<b>Air Requirements:</b>	6bar; 90psi
<b>Cameras:</b>	2 x 1624x1234pixel standard 12 x 656x492/1624x1234pixel option
<b>Lighting:</b>	LED Strobe
<b>Control Unit:</b>	high-quality industrial PC Windows embedded
<b>Auxiliary Inputs:</b>	TBD

## Functionality

Front and Back label inspection is accomplished using two 2- megapixel cameras and optimized illumination. The high resolution images allow precise inspection of label position, defects and bar/data-matrix verification without the need for additional cameras. Processing and controls are performed on a high-quality industrial pc-controller using BBULLs industry proven IMAGE software and applicationspecific algorithms.

With support for up to 10 additional cameras it is possible to expand functionality to inspect a variety of other package defects. The system also supports integration of a wide range of other inspection technologies including laser barcode readers, weighers, x-ray, and ultrasonic imaging systems. Acquisition, inspection results and the conveyor belt are monitored using BBULLs integrated embedded controller, providing precise and reliable tracking and rejection.



**BBULL**<sup>®</sup>  
TECHNOLOGY - USA

See videos and more at [WWW.BBULLUSA.COM](http://WWW.BBULLUSA.COM)  
BBULL USA, Inc. 260 Scarlet Blvd. Oldsmar, FL 34677 USA. Tel: (813) 855-1400 Fax: (813) 855-7460